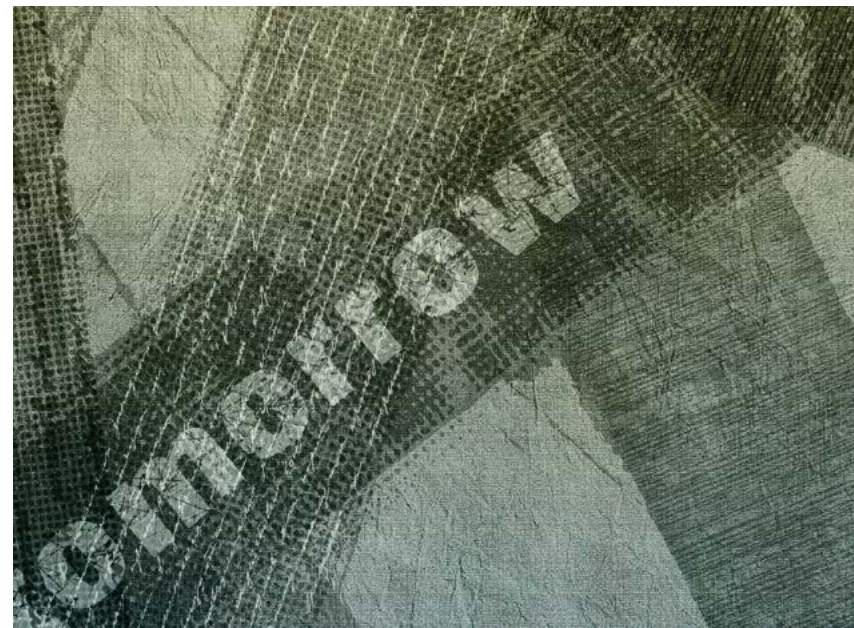
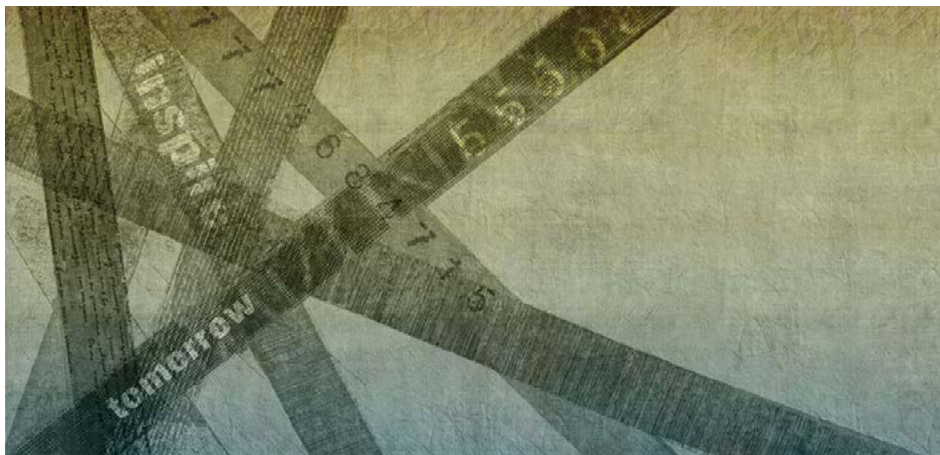


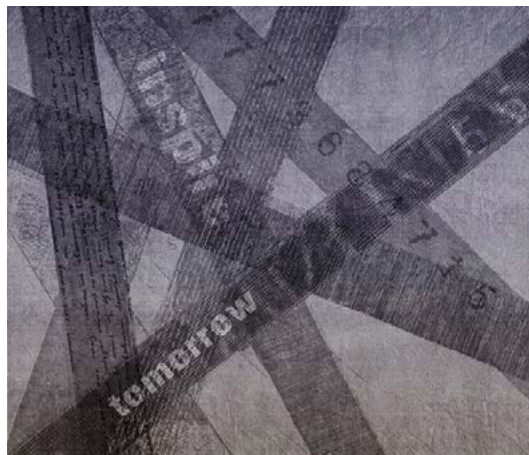
collection: POIS&STRIP / subject: STRIP



zoom



NEPSST1401



NEPSST1402

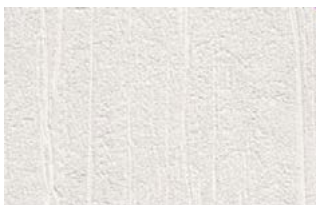


NEPSST1403



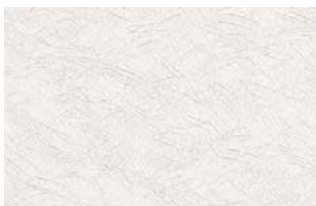
caratteristiche / benefici:		applicazioni:	
tempi di asciugatura rapidi supporto in carta ottima riproduzione del colore lavabile facile da applicare		eventi interior design retail rivestimenti murali	
compatibilità inchiostro			
eco solvente latex solvente polimerizzazione UV			
proprietà			
peso totale: 300gsm peso PVC: 210 gsm peso substrato: 90gsm tipo di substrato: carta formulazione del PVC: F16 spessore: 0,41mm resistenza alla luce BSEN20105: grado minimo 6 reazione al fuoco: Euro classification EN 13501-1:2007-B-s2,d0 resistenza all'urto EN259: pass			
resistenza alla trazione		resistenza allo strappo	
MD 4.0 Kgf/cm TD 2.0 Kgf/cm		MD 800 mN (average)TD 695 mN(average)	

#### DUNE



Un'intensa finitura che presenta sottili striature in rilievo che corrono verticalmente da una parte all'altra della sua superficie bianca, dando un aspetto organico, ma allo stesso tempo vintage al rivestimento murale. Questa finitura aggiunge un tocco di raffinatezza alle immagini digitali pensate per essere parte integrante di uno spazio pubblico.

#### JAPON

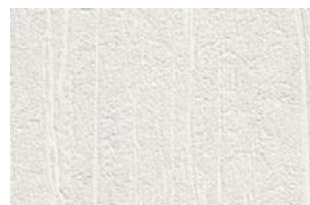


Una superficie meravigliosamente intrigante con una texture che presenta piccoli graffi in bassorilievo ed aggiunge un tocco di stile e di carattere a grafiche e fotografie artistiche. La sua texture si adatta sia a colori intensi uniformi, che a tonalità vivaci e toni leggeri.



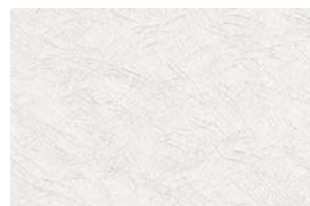
features / benefits:		applications:	
fast drying times paper backed enhanced colour reproduction washable easy to apply		events interior design retail wall coverings / murals	
ink compatibility			
eco solvent latex solvent UV-curable			
properties			
total weight: 300gsm PVC weight: 210 gsm substrate weight: 90gsm substrate type: paper PVC formulation: F16 thickness: 0,41mm lightfastness BSEN20105: minimum grade 6 fire performance: Euro classification EN 13501-1:2007-B-s2,d0 impact resistance EN259: pass			
tensile strength		tear strength	
MD 4.0 Kgf/cm TD 2.0 Kgf/cm		MD 800 mN (average)TD 695 mN(average)	

#### DUNE



A texture-rich finish with fine raised rivulets running vertically across its high-white surface giving an organic, yet somehow vintage look and feel to the wall covering. This finish adds a touch of sophistication to digital images designed to be an integral part of a public space.

#### JAPON



A beautifully intriguing surface with bas-relief flecks of texture that adds a stylish touch of character to graphics and art photography. Its uniform texture allows for consistent depth of colour and it works as well with vibrant hues as it does with subtle tones.